



Read the instructions contained in this manual carefully, and once the equipment has been installed, keep it in a safe place for future reference.

This device must be installed by professionally qualified technicians.

The manufacturer shall not be held responsible for any malfunctions or damage caused by the device to objects or persons if the instructions and warnings contained in this manual are not followed strictly.

The manual provides instructions for the installation and correct use of the device; following these instructions will ensure the maximum functionality of the device.

This device must only be used for the purpose for which it was designed, which is for the extraction of polluted air and small flying insects from a closed space.

Having removed the packaging make sure that the device is intact and that there is no visible damage or signs of tampering.

Dispose of the packaging and any plastic bags correctly, and keep them out of the reach of children.

This device must be used in the full respect of the following two basic safety regulations:

- **never touch the device with damp hands or feet;**

- **keep the device out of reach of animals, children, or anyone who is not capable or experienced in its use.**

Always make sure that the mains supply corresponds to the voltage and frequency requirements specified on the device data label. Furthermore make sure that the capacity of the supply is suitable to run a device with this nominal power.



Warning! Before carrying out any maintenance or internal cleaning operations on the machine, disconnect the device from the electrical supply.

In case of malfunction, disconnect the device from the electrical supply and call a qualified assistance service centre. In all cases, always use original spare parts.

If the device needs to be removed, make sure that the device has been disconnected from the electrical supply before disassembling it.

The electrical system to which the device is connected must comply with the requirements of the standards IEC 64 and CENELEC 384.

SPECIFIC WARNINGS

This device responds to the EC directives EMC 89/336 concerning radio interference and electro-magnetic disturbance blanking. It is also certified in accordance with the EC directive 73/23 concerning electrical safety.

Do not use this device at room temperatures of greater than 40°C (104°F).

Do not install the device where it is directly exposed to atmospheric elements such as snow or sun.

Do not place the device or any of its parts in water; for cleaning, please refer to the instructions in the section "cleaning".

To avoid the risk of fire, do not use the device near inflammable or explosive substances, dusts or vapours. It is further recommended not to use the device to remove fumes or air saturated with fatty and/or corrosive substances.



Warning! This device must be connected to the power supply using an external bi-polar switch with a contact distance of at least 3 mm.

Always make sure that a space of at least 50 cm is left free in front of the device.

Installation

This device is designed for wall or glass installation, although glass installation is preferable.



Warning! The device must be installed at a height of at least 2.3 metres from floor level.

The device has double electrical insulation and is protected against water splashes, and can therefore be positioned outside or in humid rooms or spaces, following the installation regulations for electrical equipment in force in the country of installation.

Glass installation

It is recommended to install the device on a glass surface with a thickness of not more than 20 mm.

It is recommended to make a hole in the glass with a diameter of 187 mm.

It is advisable to have the device installed by a specialised technician (INCLUDING THE CUTTING OF THE CIRCULAR HOLE IN THE GLASS).

Inside the packaging you will find all components needed for installing the device in glass:

An external gravity grille, with swinging fins (that will be mounted on the external part of the glass) - fig.1, part. A

A silicone seal (also positioned on the outside of the glass) - fig.1, part B.

A plastic support to be positioned inside the glass - fig.1 part. C.

Once the hole has been made in the glass, follow the assembly phases shown in figure 2 below to apply the glass fixing kit.

WARNING: SIMPLY SCREW ON THE TIGHTENING NUTS USING YOUR FINGERS SO AS NOT TO BREAK THE GLASS, DO NOT USE SPANNERS OR OTHER TOOLS.

Remember that the gravity grille fins must face downwards.

Remove the screw F in fig.1 and remove the bulb-holder cover from the device - part. A. Having removed it, handle the device carefully in order not to damage the internal parts.

Match up the holes on the back of the device with the holes in the plastic support, which has already been fixed to the glass.

Fix the fan to the support using the 4 small screws supplied.

Warning! The device must only be mounted vertically i.e. with the terminal board in the upper part of the device.

WALL INSTALLATION

Warning! This fan was designed for extracting air directly into the external environment, or in straight pipes or pipes with low air resistance. Its performance may be reduced with respect to the nominal values if it is not installed in this way (for example using long pipes with bends and elbows).

The device must not convey air through pipes that have already been used to convey dangerous gases or fumes.

It is recommended to install the device in walls with a thickness of at least 100 mm and at a height of at least 2.3 metres from the floor. If you wish to block the access to the fan wheel from the outside, it is possible to install a fixed or external gravity grille on the wall, both are available as accessories.

This product is suited for installation in piping with a diameter of 150 mm. It can be installed both in the wall and the ceiling.

For wall installation, the parts A-B-C in fig.1 are not required.

Remove the screw F in fig.1 and remove the bulb-holder cover from the device - part. A. After this, handle the device carefully so as not to damage the internal electrical components.

Place the air conveyor part. D in fig. 1 inside the waste pipe.

Mark the position of the 4 holes using a pencil (G in fig. 1) on the wall.

Drill 4 6mm holes in the wall against the marks and insert the 4 expansion plugs supplied in the transparent bag (H in fig. 1)

Fix the device to the wall, screwing the 4 large screws supplied (I in fig.1) into the 4 holes drilled.

ELECTRICAL CONNECTION DIAGRAMS

The device must be connected to the power supply through an external bi-polar switch with a contact distance of at least 3 mm. Press this switch to switch the device on or off, for both the light and the fan.

By pulling the cord switch, the light is switched on or off. In this way the device can be either fully switched off, with the fan and light on or with the fan only on. The electrical connection is illustrated in fig. 7.

There are two possibilities for the electrical connection:

From the right

From the left

As shown in fig. 3

In any case the plastic must be broken or cut where the cable will pass, and whether connecting to the left or to the right, pass the cable inside the rubber protection.

The fan must be connected using a HO5 RN F or HO5RN H2-F cable with a 2x1 mm² section. In the first case, the cable holder must be mounted as shown in fig.4. In the second case, as shown in fig.5. Remember that if the cable is inserted from the right, the cable holder must be moved (part A fig. 6).

The blue wire must be connected to the N pole on the terminal board, and the brown wire to the L pole.

MAINTENANCE AND CLEANING

The light should be cleaned periodically, every 2-3 months, using a damp cloth. Do not use alcohol or corrosive detergents.

Before carrying out any maintenance on the machine, make sure that the device has been disconnected from the electrical supply.

To ensure maximum efficiency of the device, replace the bulbs every 1500 hours or at least once a year. To replace the circular bulb, contact the nearest technical assistance service centre or directly contact your dealer.

EMERGENCIES

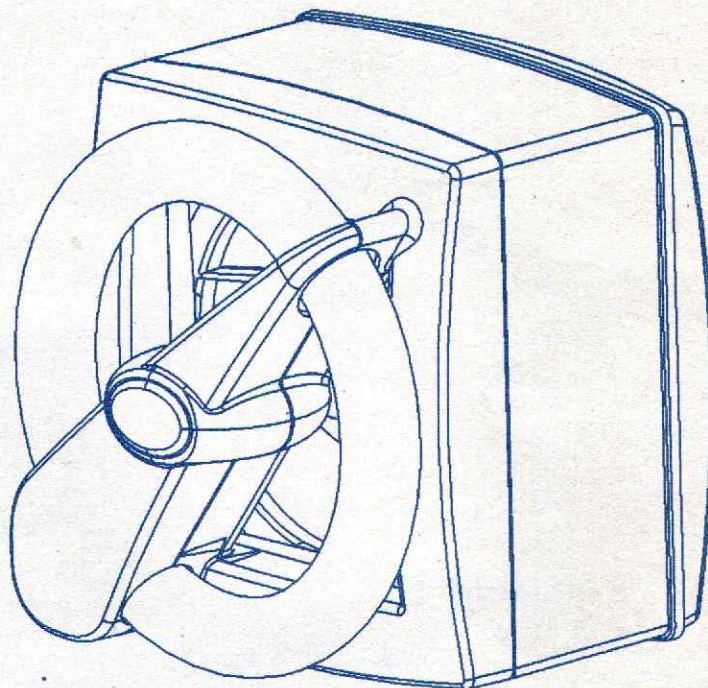
If the fan or the light do not work, make sure that the installation and electrical connections have been completed correctly.

If the fan does not spin, make sure that nothing is obstructing its movement.

MO-EL®

MO-EL S.r.l.
Via Galvani, 18
42027 Montecchio E. (RE) Italy
Tel. +39-0522868011
Fax +39-0522864223

E-mail: info@mo-el.com
Web site: www.mo-el.com

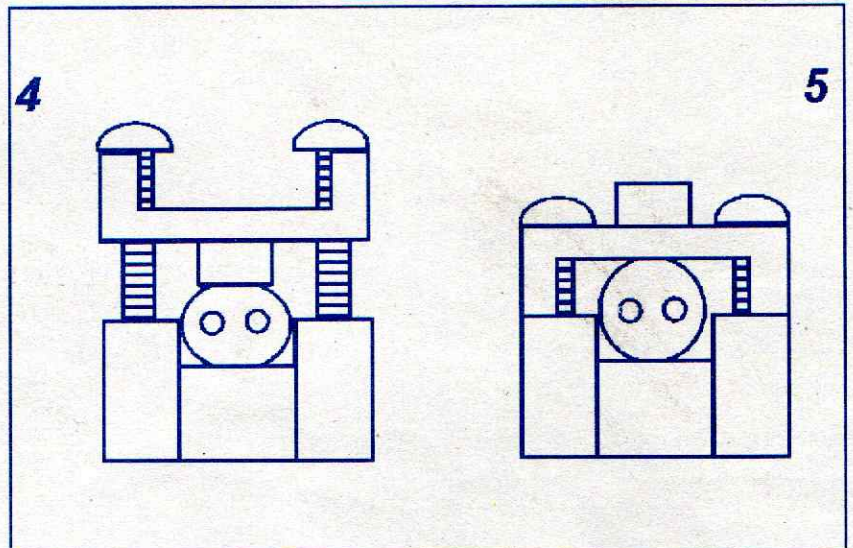
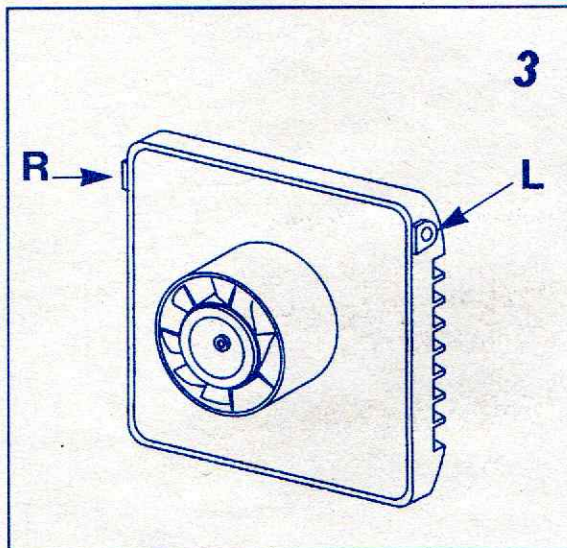
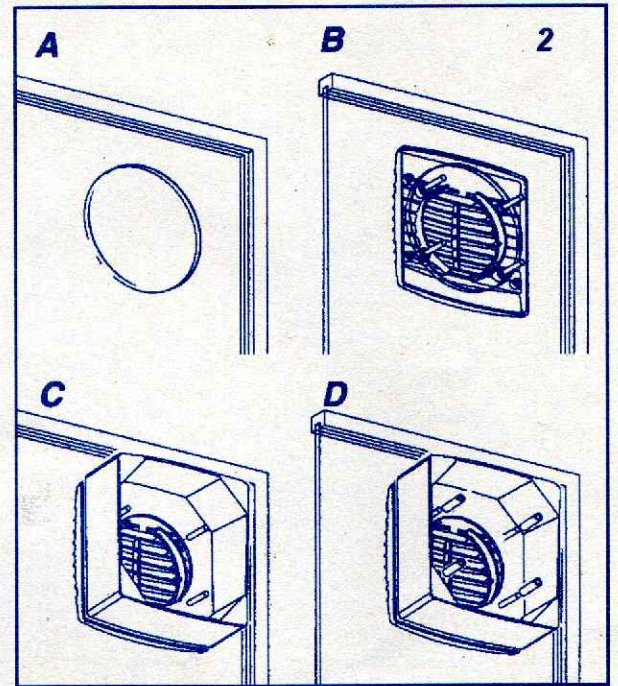
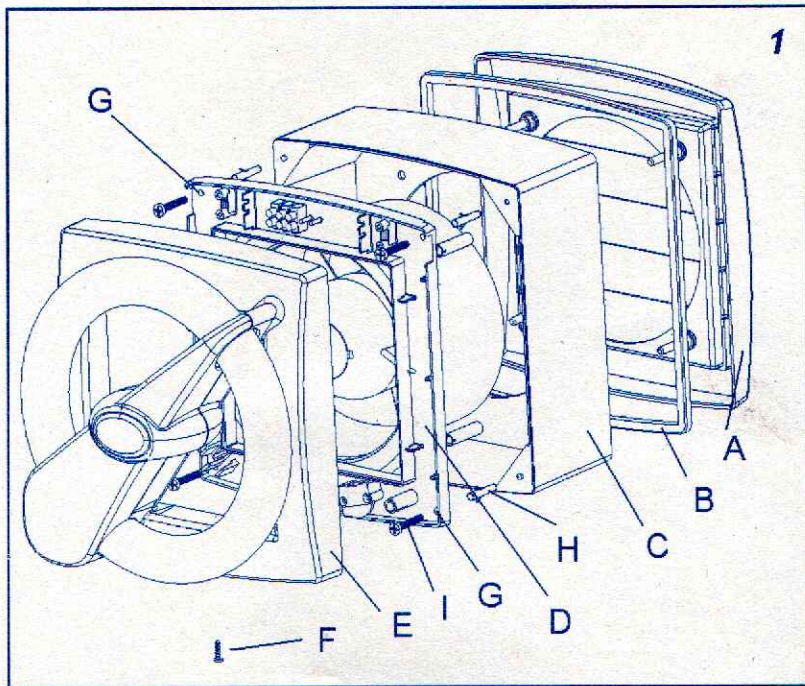


354 FLY AWAY

ESTRATTORE D'INSETTI
INSECT EXTRACTOR
EXTRACTEUR D'INSECTES
EXTRACTOR DE INSECTOS
INSEKTENAUSWERFER
EXTRACTOR DE INSECTOS

USO E MANUTENZIONE
USE AND MAINTENANCE
EMPLOI ET ENTRETIEN
USO E MANUTENÇÃO
USO Y MANTENIMIENTO
GEBRAUCH UND WARTUNG





5

